



# HANGAR NEWS

**NEWSLETTER FOR THE FIRST WEEDWACKER  
AEROSQUADRON  
AMA CHARTER # 1651  
October 2020**

First Weedwacker Aero Squadron  
P.O. Box 2044  
Lakeside, CA 92040

Sign up for Email Delivery of  
Newsletter :

[news.weedwackers@gmail.com](mailto:news.weedwackers@gmail.com)

Web: <http://www.weedwackers.org>

Club Officers Email:

[info.weedwackers@gmail.com](mailto:info.weedwackers@gmail.com)

President: Keith Miller 619-405-0192

V-P: Jeffrey Coskey 619-913-1455

Sec: Bruce Allen 760-789-3745

Treas: Scott Graupmann 858-945-6969

10938 Vivaracho Way

San Diego, CA 92124

Fun Fly Chairman Keith Miller

Race Chairman

Safety Officer Ron Keith

Field Marshals:

Vernon Gilmore

Ron Keith

Dick Milhausen

Ken Bryant

Butch Weiser

Gary Rold

Tim Peterson

Wings Over Gillespie Liason:

TBD

Raffle Chairman

Ron Keith

619-312-0968

Editor: Don Westergren

619-660-1137

3942 Calavo Dr

La Mesa CA 91941

Webmaster: Tim Peterson

[webmaster@weedwackers.org](mailto:webmaster@weedwackers.org)

Instructors:

Scott Graupmann\* 858-945-6969

Keith Miller\* 619-405-0192

Richard Crutchfield\* Jeff Coskey\*

Butch Weiser\* Dean Nickol\*

Dick Mulhausen

\*AMA Introductory Pilot Program Instructors

Electrical Aircraft Safety Technicians:

Scott Graupmann, Glenn Merritt,

Jeff Coskey, Butch Weiser,

Bruce Allan, Larry Bagalini and Keith Miller

HANGAR NEWS is printed for the members of the FIRST WEED WACKER AEROSQUADRON and its contents do not necessarily reflect the policies of the club. Editorial deadline is the 15th of each month. Articles, news items and classified ads should be sent to Don Westergren, 3942 Calavo Dr., La Mesa, CA 91941.

Articles originally published in this newsletter may be reprinted and published by modelers and club newsletters. We ask that credit to the author and this newsletter be acknowledged in the reprint. We will do the same.

CLUB FIELD: Cactus Park (East), Ashwood St. (1/4 mile N-E of El Capitan High School) in Lakeside, CA. Please be sure the last flyer to leave locks the pin box and the gate..

## R/C Schedule 2020

Nothing is scheduled due to Corona Virus

## Next Club Meeting Tuesday Oct 6 is a Virtual Meeting

Members receiving the PDF version can click CTRL + click on the links here to join the meeting:

[meet.google.com/shd-sesj-mzs](https://meet.google.com/shd-sesj-mzs)

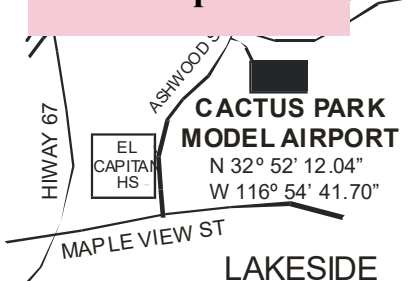
## October is CLUB OFFICER NOMINATION MONTH

If anyone wants to volunteer to be a club officer, please notify [info.weedwackers@gmail.com](mailto:info.weedwackers@gmail.com). Our current officers have volunteered to stay in office again if no one else wants to run.

NEXT Virtual MEETING:

**Tues. Oct 6, 7:00  
Google Meets**

**Field Is Opened**





# HANGAR NEWS

## **Meeting Minutes September 1st, 2020**

*Bruce Allen*

The meeting for September the 1st, 2020 (because of the Covid-19 restrictions) was carried out via Video Conference from members homes. These Minutes have been compiled from my notes. (No Audio transcript available)

Present on the call:

Keith Miller President & invigilator, Jeff Coskey VP, Scott Graupman Treasurer & Bruce Allen Secretary, Ron Keith Safety Officer.

Other members who attended during the meeting:

Tim Peterson, Ed Mullen, Bill Simmons.

Dan Higdon, Bobby Rink, Cedric Martin, Steven Jones

Julian Sonderegger

### **Opening Comments**

Attending Video members names will be added into the January Banquet Raffle 2021.

(Apologies if I missed anyone, please email me so I can make an addendum)

### **Approval of Minutes in August 2020 Hangar News**

After some discussion by those present the approval was given:

Proposed Bruce Allen, Ron Keith, Julian Sonderegger, Unanimous

### **Treasurers Report (July/August)**

<b>Old Balance</b>	<b>\$14,014.77</b>
<b>PayPal income</b>	<b>\$302.48</b>
<b>United Services</b>	<b>(\$45.11)</b>
<b>Net</b>	<b>\$257.37</b>
<b>New Balance</b>	<b>\$14,272.14</b>

### **Safety**

A suggestion was made to have a Log Board that the membership can use to leave notes etc. It could be affixed to the inside of the chair cabinet.

The design of the board should fit in the Cabinet & have a wipe off surface? (TBD)

Proposed: Dan Higdon, Second Bruce Allen, Unanimous

**Roundup-** the County have decided to NOT discontinue this chemical yet. Instead they are

going to carry out sample testing on alternative products, they will copy us on results.

Our use of Roundup is minimal, but it doesn't hurt to understand the risk & what precautions to take. In the meantime, please NOTE! Roundup contains a chemical called Glyphosate & should be used following the manufacturer's directions;

"Information on Glyphosate due to uncertainty, many regions are actually banning or limiting use of the chemical, particularly in playgrounds, schools and public parks. In fact, the state of California has issued a warning about glyphosate and seven cities in CA have banned its use altogether.

The best way to minimize any dangerous effects is to follow precautions when using glyphosate products. Each product will come with detailed information on glyphosate use and any hazard warnings. Follow these carefully. Additionally, you should practice the following precautions:

- Avoid using the product when it is windy, as it can drift to nearby plants.
- Wear clothing that covers arms and legs. Use goggles, gloves and a face mask to limit exposure. Do not touch the product or wet plants with it. Always wash up after mixing or spraying glyphosate. Read more at Gardening Know How: Is Glyphosate Dangerous? Information On Glyphosate Use <https://www.gardeningknowhow.com/plant-problems/weeds/glyphosate-information.htm>"

**Monthly rules review**, we covered 11.a. Other than landing or taking off, flying is prohibited south of the SAFETY LINE, situated 25 feet from the PILOT LINE.

We've had several gliders trying to get lift over the hill, and quads flying well south of the safety line. With the exception of pilots flying rotorcraft at Station "H", all other pilots must stay north of the red safety line that runs forever east and west.

Meeting ended at 19:30

# HANGAR NEWS

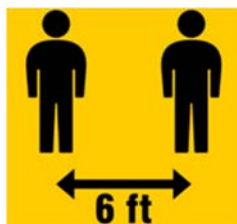
## President's Message October 2020

### Monthly Meeting

We'll continue our series of virtual monthly club meetings using Google Meet on Tuesday October 6th. The link is [meet.google.com/shd-sesj-mzs](https://meet.google.com/shd-sesj-mzs), and it starts at 7pm. We're usually done in less than an hour. If you have anything you'd like to bring up or recommendations for club operations, please consider joining us! If you can bring a show-and tell model or item in front of your computer camera, that would be nice!

### Social Distancing

Please observe the posted social distancing and face covering protocol. It's courteous, considerate and safe.



### Bill Simmons Donations

Fellow member Bill has very generously donated a wide variety of kits, models, engines, books and more to the club. If there's room in this issue of Hangar News, I'll ask Don (our editor) to add the list within. I'll follow it up with a dedicated club-wide email with photos and recommended prices. That may happen before this issue is published. I apologize in advance to those of you who don't do email. That's the best and most modern way for me to push out a lot of information to a lot of people, and the postal version of this fine periodical sometimes won't get to readers quickly enough.

If you're interested or have questions, please call or email me. All of the items are in storage now and Jeff or I can arrange an inspection. Some of the items carry a fairly high value (such as the Webra and Super Tigre G60 engines and several of the full kits).

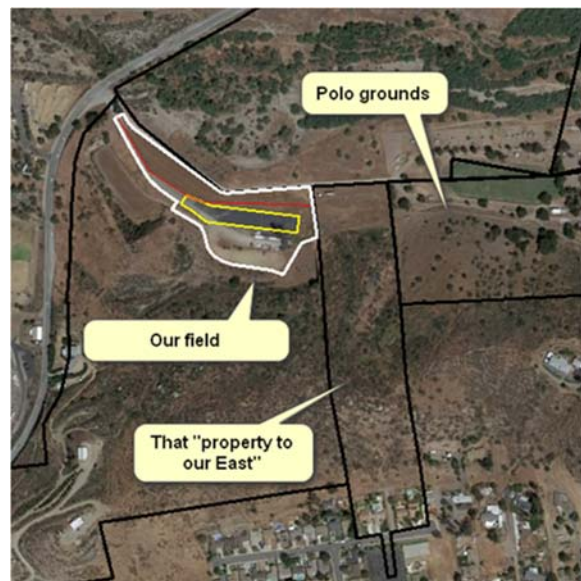
### County Lease

Ah, the wheels of bureaucracy turn ever so slowly! More than five years ago, the County mentioned that our Use Agreement would shift to a lease. In January of this year, they provided us a draft and to date we still don't have an agreement. Our latest rebuttal was to

verbiage in which they wanted us to either buy property insurance covering the shade structure, or be forced to replace it if it was ever damaged. We've made it very clear that it belongs to the club (was built through sweat and donations of members gone by) and that we've no intention to insure it. If it's damaged in a storm or by fire (or whatever), it's fully up to the club on restoration steps, and must not be included in the lease. Hopefully we close on this thing before the end of the year!

### Activity on property to our East

R.J.'s Nursery is setting up shop just to our east in the thin strip of property that goes up and over the hill (which is land-locked). They have two horses on the property which aren't associated with the River Valley Equestrian Center to our east (the polo ranch, previously "Hering Ranch"). I recently spoke with the business owner, Roger who is leasing the



property. He's a very friendly gentleman with every intention of ensuring our successful and lasting relationship. They operate a commercial concrete and nursery business with several locations around the county. This location will be used primarily as a commercial nursery. It's not a business that will generally be open to the public, but there will occasionally be people on site. While Roger has no worries of flying over their area, I assured him we would



# HANGAR NEWS

do our best to avoid flying directly over any people or their horses. For now, and until we understand the longevity of their operations, we'll need to **pay attention to activities on the property and adjust our flight profiles accordingly**. Recall the AMA mandate that we don't fly directly over people. While they have workers or customers on site, or if the horses are roaming freely, our flight patterns must be adjusted such that our approach and landing pattern is shortened up. If you're flying a large-scale model or simply aren't accustomed to flying a short approach, then you either need to land long (to the left), or don't fly.

If this business appears that it will survive and that there are frequently people on site, we'll consider a more permanent improvement to our runway to extend the smooth surface to the West (left). That's an expensive prospect, so we'll not jump into that just yet.

As they have several vehicles parked on the property, it is critically important that any incident that involves our models and their vehicles be reported to a member of the Board immediately! I have an action to ask if they'll park in a less risky location, but regardless – an immediate call to a Board member is crucial.

## **New members**

Welcome to our newest members:

Jack Adams is another in a line of members who join us from Dick Milhausen's family. Lee Greer and Jeff Johnson also joined us in September.

Welcome, guys!!

Current membership is at 132, up three from last month, and due to go up by another three prospective members at the time of this writing.

Until then - *Remember to keep your fingers clear of run-away thin CA!*

Keith

## **Bill Simmons collection:**

### **Kits:**

Jemco, F4U-1A Corsair kit (Chance-Vought)

Amco, Aeromaster "Too" biplane kit

Lanier, Caprice ARF (molded plastic)

Lanier, Dominator 1500 kit

SIG, Komander (partial kit, fuselage only)

Carl Goldberg Shoestring R/C kit (partially built)

Great Planes, Slow Poke Sport 40 (partially built)

SIG, Chipmunk control-line kit

Cleveland Models, Luscombe Sedan kit

### **Engines:**

Magnum XL .61

Super Tigre Bull Ring .40

Magnum XL .46

Thunder Tiger GP .61

ASP .40

Magnum XL 1.08 (nearly new)

OS .25 F

Webra Black Head 10 cc (.61), gas version (new)

Models, nearly RTF:

Ugly Stick with Super Tigre G60 twin-plug (receiver ready)

Citabria with OS FX 46 (receiver ready)

### **Misc:**

JR, Circus Series IV radio system (vintage, new in box)

Craftsman Bench Grinder, 1/3 HP

Harbor Freight Pneumatic 3" high speed air cutter

Harbor Freight Pneumatic high-speed metal saw

Dremel Moto Tool set



# HANGAR NEWS

Welcome to:

**Café** 

*Breakfast  
& Lunch*

---

 **Deli**

*Take Home*  
MONDAY - SUNDAY  
6:00 a.m. - 3:00 p.m.  
12381 Maplevue  
(Corner of Hwy 67 & Maplevue)  
Lakeside, CA 92040  
**619-443-4100**

All sandwiches include a side dish: your choice of fruit, potato salad, chips, cottage cheese, applesauce, soup, or salad.

SUB SANDWICHES  
Lettuce, Tomato, Mayonnaise and Italian Dressing

*Entire Menu is available "To Go".*

**DISCOUNT**  
**HOBBY**  
**WAREHOUSE**

